

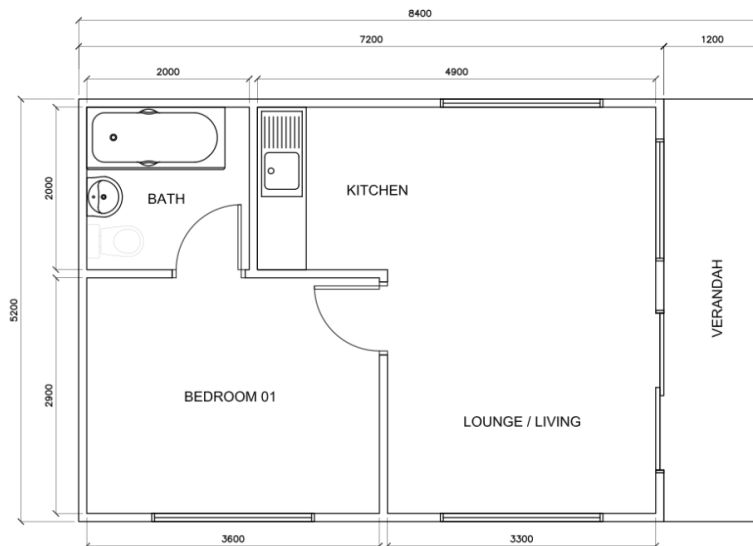


everitt wood designs

true timber experts

Floor plans

One bedroom executive

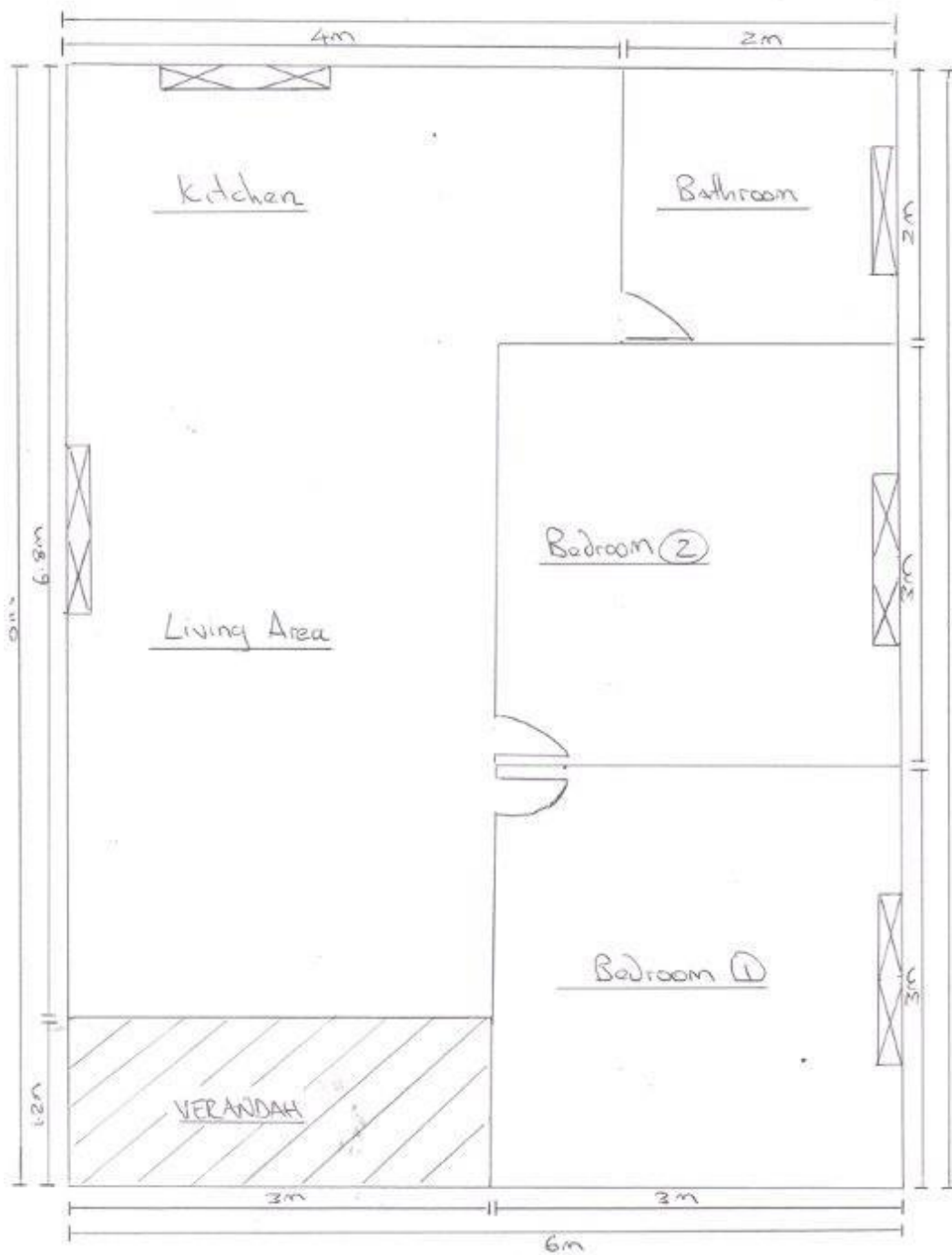


Two bedroom special (only rough sketch available for now as its a new design)

cell: 082 654 7171 | tel: 031 459 0965 | fax: 031 459 0961

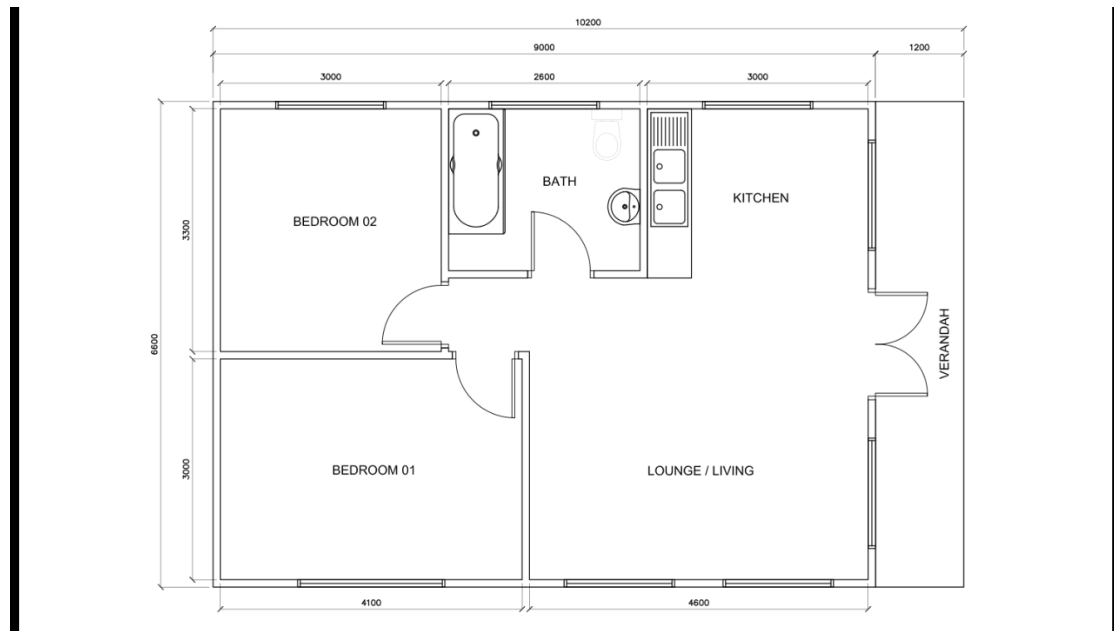
email: andrew@everittwood.co.za | web: www.everittwood.co.za | address: 80 Dayal Clairwood, Durban, 4052

Everitt Wood Designs | 2005/054547/23 | director: Andrew Everitt

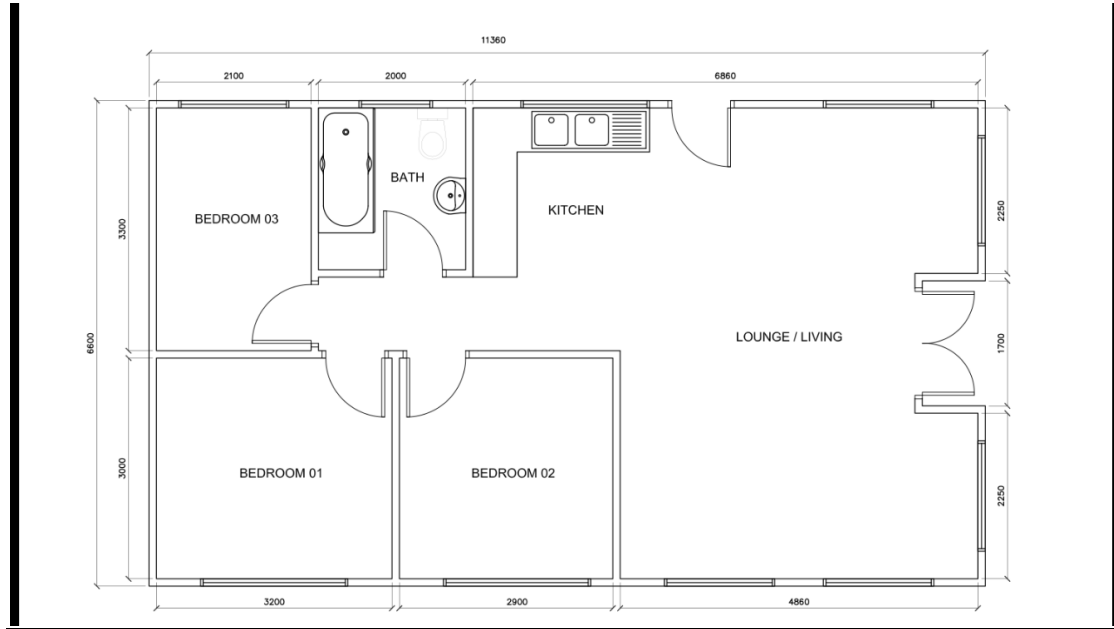


2 BED SPECIAL

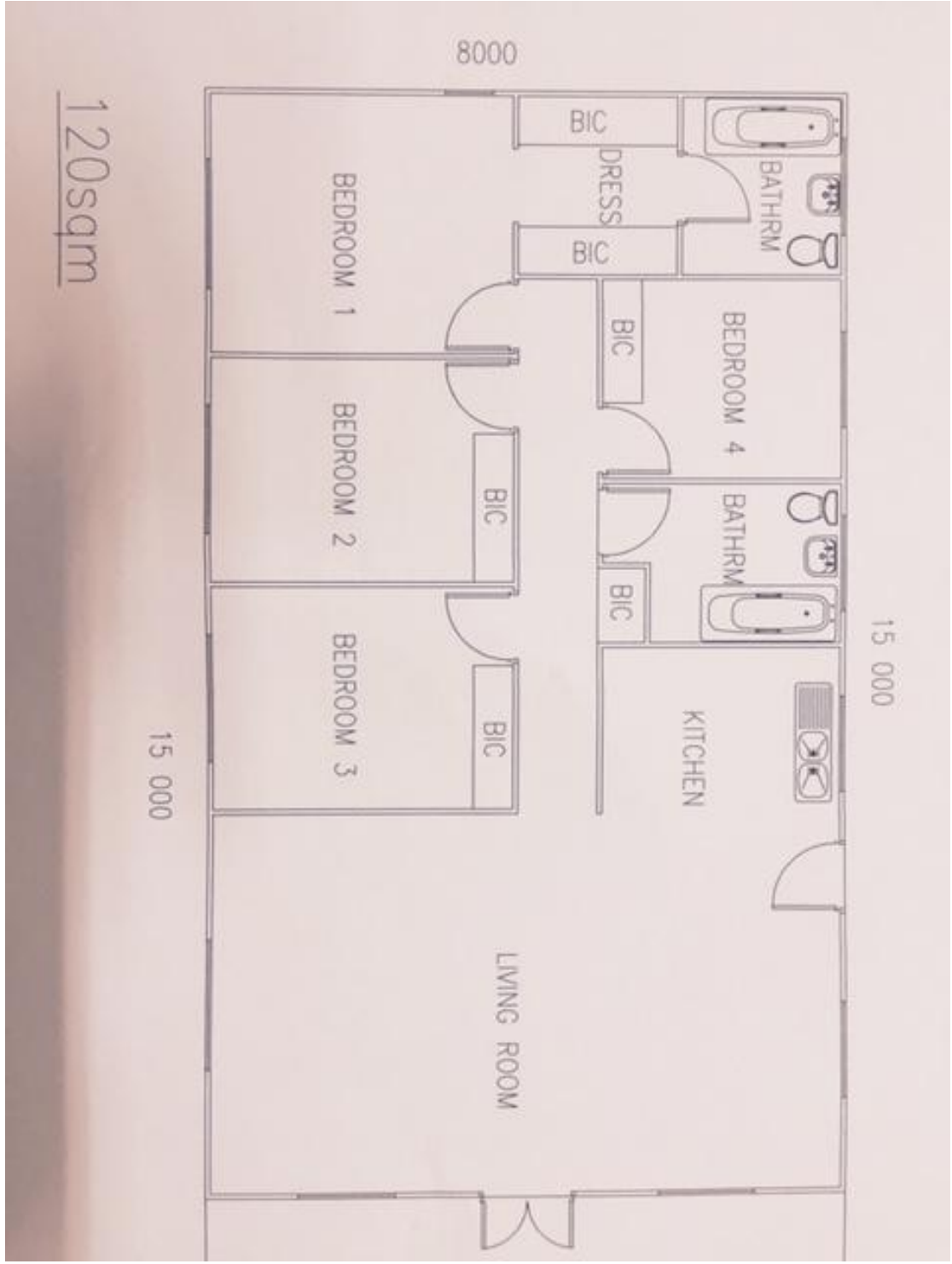
Two bedroom XL



Three bedroom cottage



Four bedroom cottage



120sqm